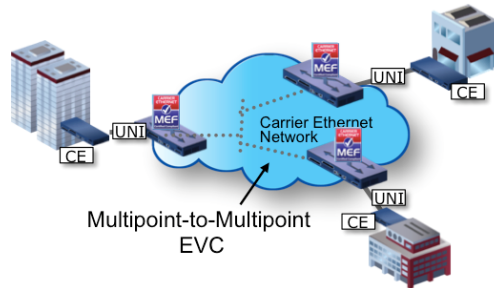


E-LAN

An **E-LAN** is a [multipoint-to-multipoint](#) service that connects a number of [UNIs](#) (2 or more) providing full mesh connectivity for those sites. Each UNI can communicate with any other UNI that is connected to that Ethernet service.

Example(s)



E-LANs are used to create:

- Multipoint L2 VPNs
- Transparent LAN services
- Layer 2 VPNs (L2VPN)
- Foundation for IPTV and Multicast networks

Related and Further Reading

[CE 2.0 Services](#) |

Categories

Status

DRAFT

? Unknown Attachment

Source(s) and Reference(s)

[MEF 6.2 - EVC Ethernet Services Definitions](#) |

Contributor(s)

[Daniel Bar-Lev](#)

Reviewer(s)