

Appendix B: SD-WAN Use Cases (Informative)

This section provides several SD-WAN use cases to assist in putting the normative sections of this document into context. These diagrams and text have been derived from the MEF white paper, [MEF 3.0 SD-WAN Services](#) [24].

B.1 Hybrid WAN

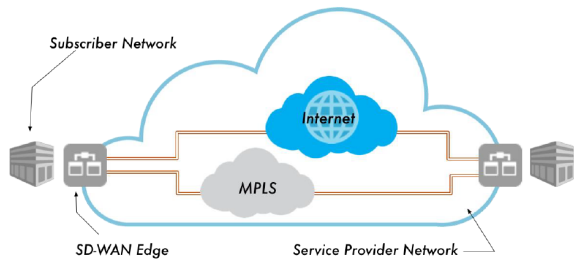


Figure 7 – Use Case: Hybrid WAN

Figure 7 illustrates a use case for an SD-WAN Service operating over two Underlay Connectivity Services, an Internet UCS and an IP VPN UCS (e.g., implemented over MPLS) between the two sites. This hybrid UCS use case enables the Subscriber to use the two UCSs to achieve higher resiliency.

This is, perhaps, one of the most popular use cases because many enterprise Subscribers have both Internet and IP VPN UCSs to interconnect their sites, so the SD-WAN managed service enables them to take advantage of the benefits that SD-WAN provides over multiple UCSs.

Status

PUBLISHED

Study Requirement

MEF-SDCP Exam Study Reference

Source(s) and Reference(s)

[MEF 70 - SD-WAN Service Attributes and Services Definition](#)

[MEF 3.0 SD-WAN Services](#)

Related and Further Reading

Content by label

There is no content with the specified labels

Project Lead

[Kirby Russell](#)

Reviewers/Contributors

MEF-SMEs

[Basil Najem](#)

[Sholy Augustine](#)

[Ryan Hoffman](#)

MEF Staff

[Daniel Bar-Lev](#)